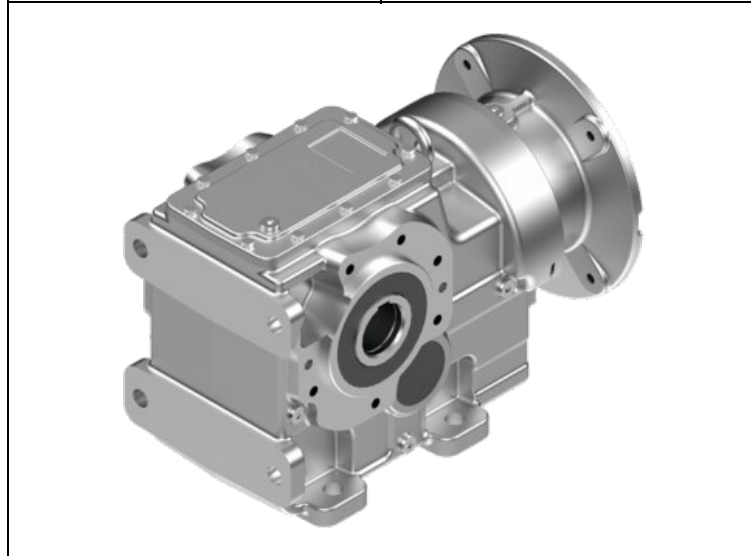


Helical Bevel Gear Units K Series

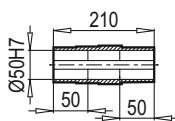
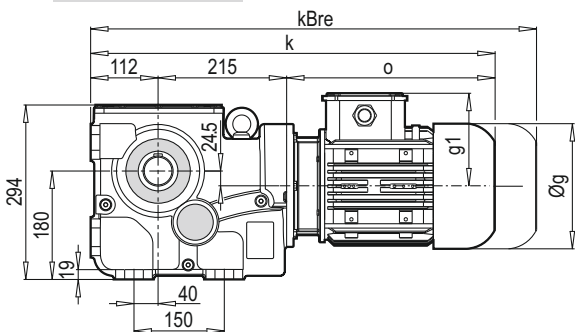
Technic Selection	
Type	K
Input Option	Without Motor
Assembly Shaft Design	DG (HOLLOW SHAFT)
Body Size	50390
FA Press [N]	4400
FA Pull [N]	4400
FR [N]	6300
Frequency [Hz]	50
fs	1.7
iges	23.26
M2 [Nm]	820
M2max [Nm]	1400
Motor Efficiency	IE2
Motor Size	132/4P
n1 [rpm]	1400
n2 [rpm]	60.2
P1 [kW]	5.5
P1max [kW]	9.39



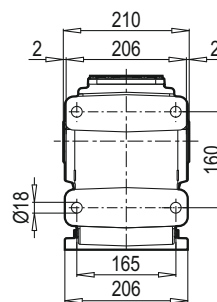
Variation	
Input Connection Type	PAM
Input Backstop Status	Without Backstop
Output Shaft Diameter	ØD=Ø50H7[mm]
Mounting Position	M1
Input Connection Size	PAM-132-B5

Option	
Oil Status	Exist
Oil Type	Mineral ISO VG 220
Vent Plug	Standard
Oil Indicator Plug	None
Product Label	Standard
Color	RAL 7000
Montage Position Status	Standard
Case Material	GGG-40
Reinforced Bearing Status	None
Output Oil Seal Type	NBR
Output Bearing Quality	Standard

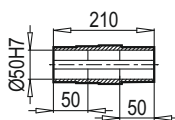
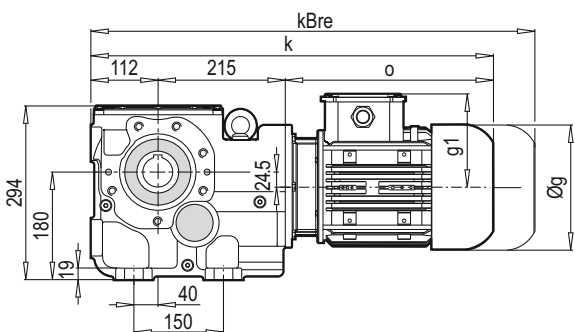
K 50390



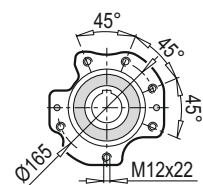
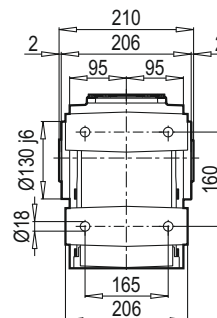
DA



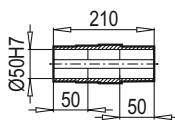
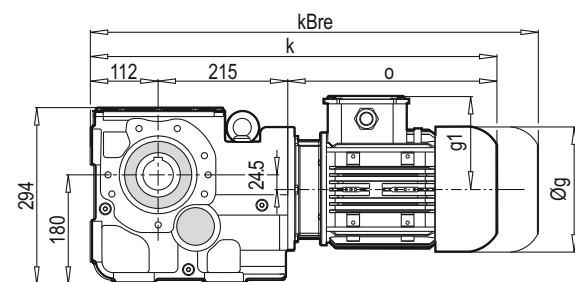
K 50390



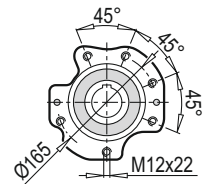
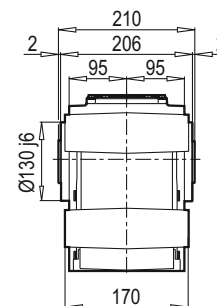
DA / B14



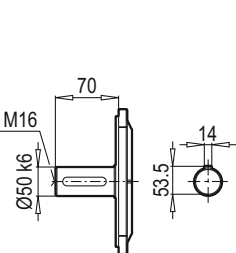
K 50390



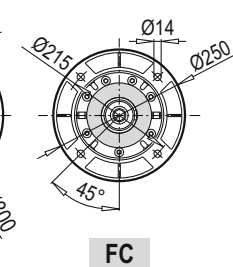
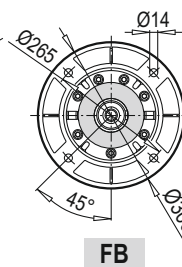
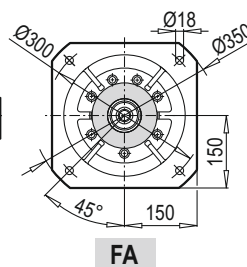
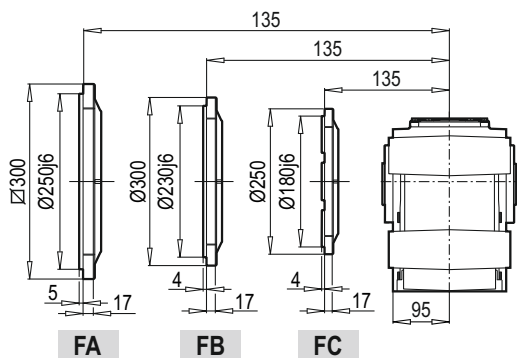
DG / B14



TMG / B5



DG / B5



FA

FB

FC

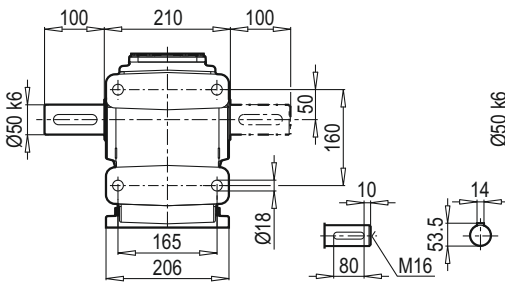
FA

FB

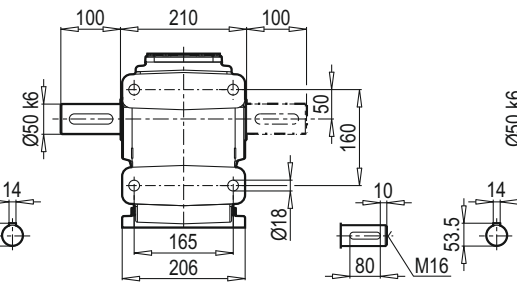
FC

	80M	90S	90L	100L	112M	132S	132M	160M/L
g	159	193	193	217	232	279	279	323
g1	127	151	151	160	168	182	182	200
k	574	620	640	663	716	723	758	845
kBre	636	693	713	744	796	831	899	997
o	247	293	313	336	389	396	431	518

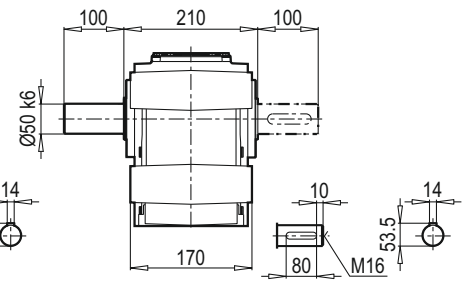
TMA - ÇMA



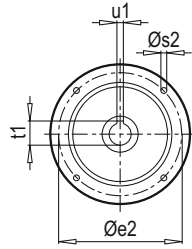
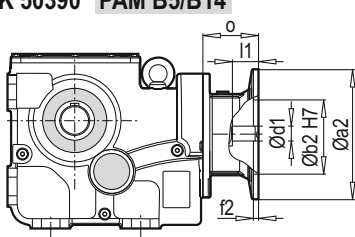
TMA - ÇMA / B14



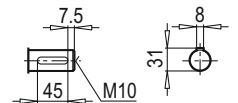
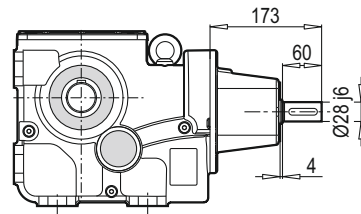
TMG - ÇMG / B14



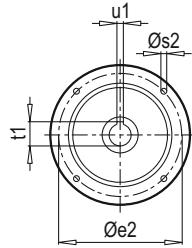
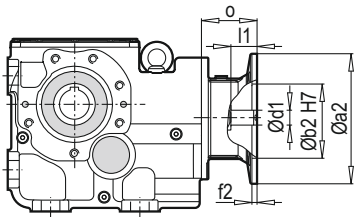
K 50390 PAM B5/B14



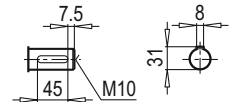
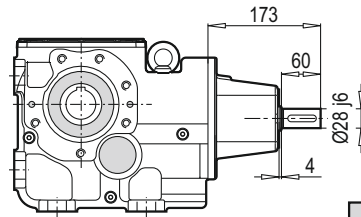
K 50390 W



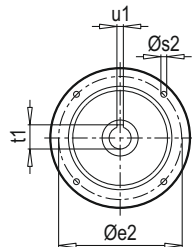
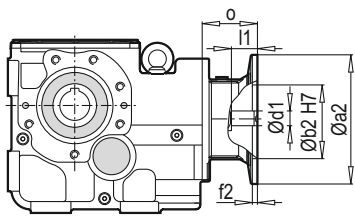
K 50390 PAM B5/B14



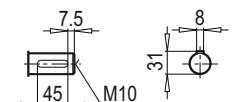
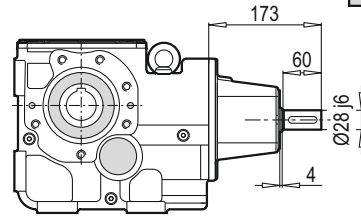
K 50390 W



K 50390 PAM B5/B14



K 50390 W



W ~ Kg	
K 50390	61

Typ / Type / Tipo Type / Tipo	PAM B5	Øa2	Øb2	Øe2	f2	Øs2	Ød1	l1	t1	u1	o
K 50390	80	200	130	165	5	10	19	42	21.8	6	70
	90	200	130	165	5	10	24	52	27.3	8	70
	100	250	180	215	5.5	12	28	62	31.3	8	85
	112	250	180	215	5.5	12	28	62	31.3	8	85
	132	300	230	265	5.5	12	38	82	41.3	10	110
	160	350	250	300	7	16	42	112	45.3	12	158

~ Kg	
PAM B5	K 50390
80	59
90	59
100	61
112	61
132	65
160	72

Typ / Type / Tipo Type / Tipo	PAM B14	Øa2	Øb2	Øe2	f2	Øs2	Ød1	l1	t1	u1	o
K 50390	80	120	80	100	3	7	19	42	21.8	6	70
	90	140	95	115	3	9	24	52	27.3	8	70
	100	160	110	130	3.5	9	28	62	31.3	8	85
	112	160	110	130	3.5	9	28	62	31.3	8	85
	132	200	130	165	3.5	11	38	82	41.3	10	110

~ Kg	
PAM B14	K 50390
80	55
90	55
100	57
112	57
132	62