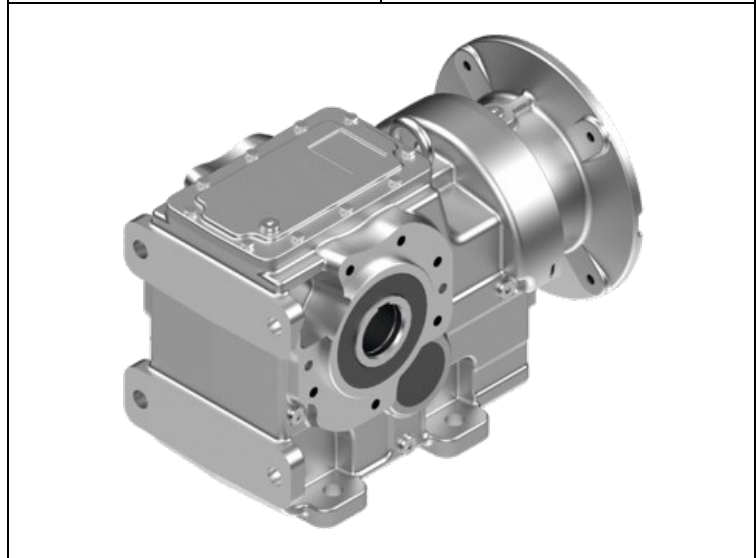


Helical Bevel Gear Units K Series

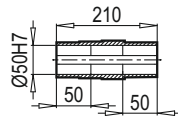
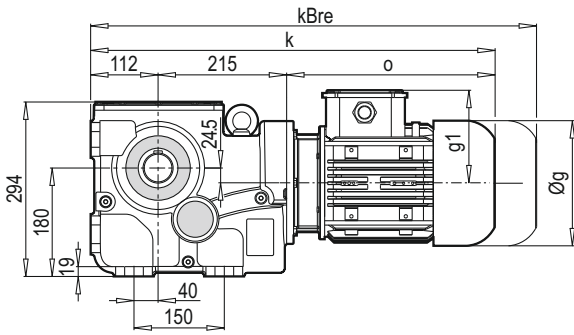
Technic Selection	
Type	K
Input Option	Without Motor
Assembly Shaft Design	DG (HOLLOW SHAFT)
Body Size	50390
Frequency [Hz]	50
fs	6.3
iges	23.26
M2 [Nm]	224
M2max [Nm]	1400
Motor Efficiency	IE2
Motor Size	90/4P
n1 [rpm]	1400
n2 [rpm]	60.2
P1 [kW]	1.5
P1max [kW]	9.39



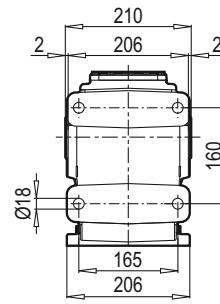
Variation	
Input Connection Type	Free Input Shaft
Input Backstop Status	Without Backstop
Output Shaft Diameter	ØD=Ø50H7[mm]
Mounting Position	M1
Input Connection Size	W-173

Option	
Oil Status	Exist
Oil Type	Mineral ISO VG 220
Vent Plug	Standard
Oil Indicator Plug	None
Product Label	Standard
Color	RAL 7000
Montage Position Status	Standard
Case Material	GGG-40
Reinforced Bearing Status	None
Output Oil Seal Type	NBR
Output Bearing Quality	Standard

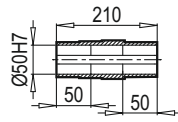
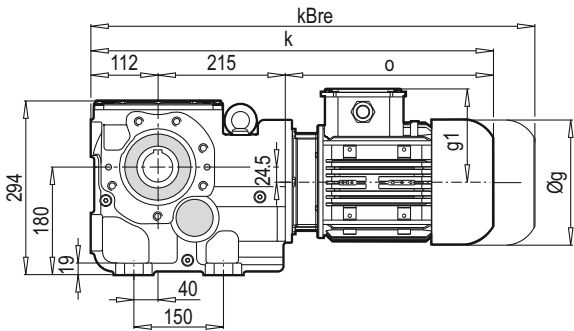
K 50390



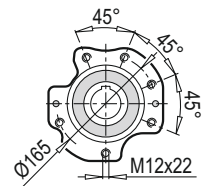
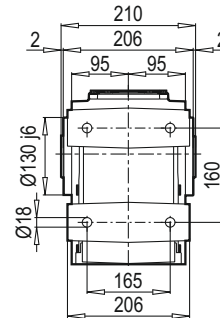
DA



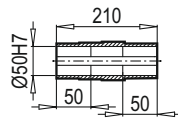
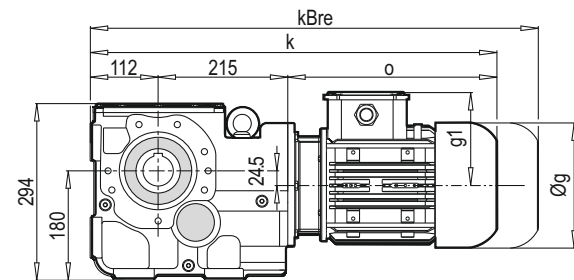
K 50390



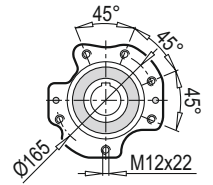
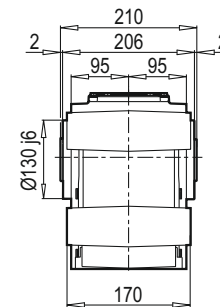
DA / B14



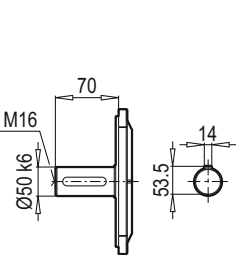
K 50390



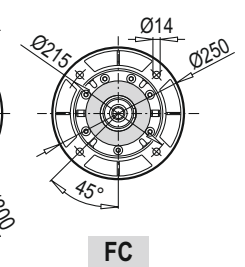
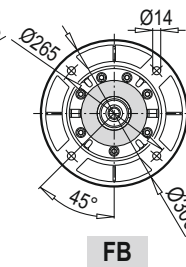
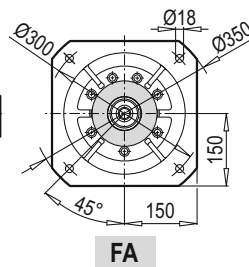
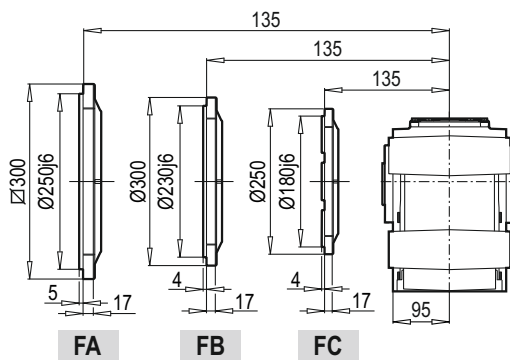
DG / B14



TMG / B5

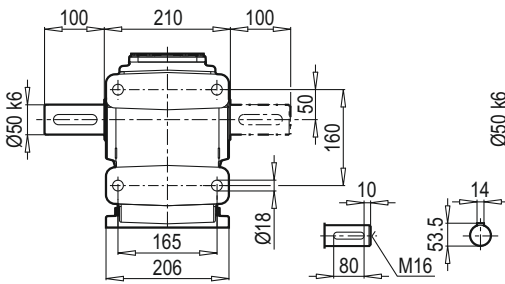


DG / B5

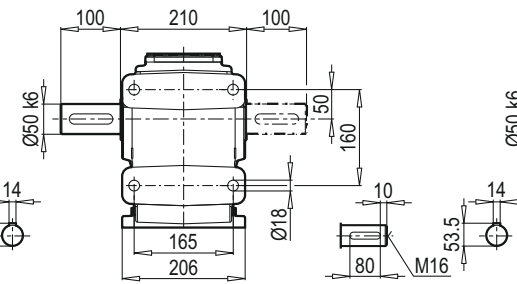


	80M	90S	90L	100L	112M	132S	132M	160M/L
g	159	193	193	217	232	279	279	323
g1	127	151	151	160	168	182	182	200
k	574	620	640	663	716	723	758	845
kBre	636	693	713	744	796	831	899	997
o	247	293	313	336	389	396	431	518

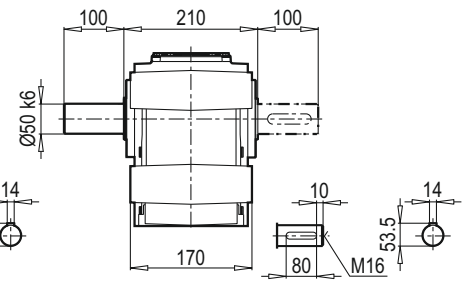
TMA - ÇMA



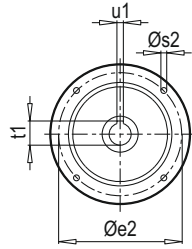
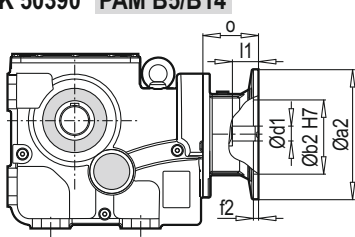
TMA - ÇMA / B14



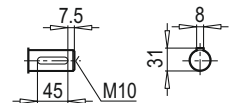
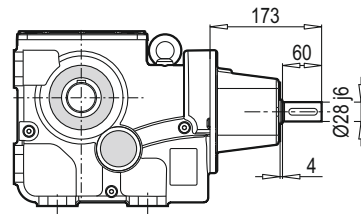
TMG - ÇMG / B14



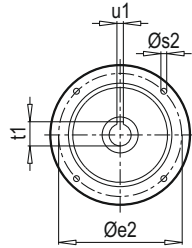
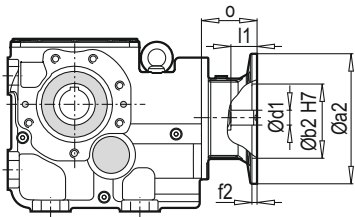
K 50390 PAM B5/B14



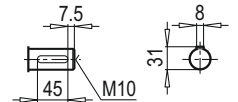
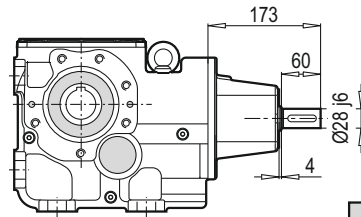
K 50390 W



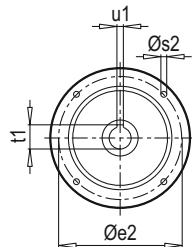
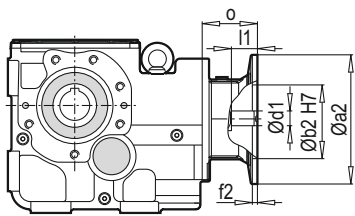
K 50390 PAM B5/B14



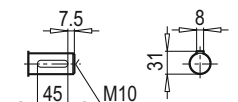
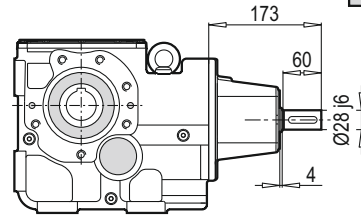
K 50390 W



K 50390 PAM B5/B14



K 50390 W



W ~ Kg	
K 50390	61

Typ / Type / Tipo Type / Tipo	PAM B5	Øa2	Øb2	Øe2	f2	Øs2	Ød1	l1	t1	u1	o
K 50390	80	200	130	165	5	10	19	42	21.8	6	70
	90	200	130	165	5	10	24	52	27.3	8	70
	100	250	180	215	5.5	12	28	62	31.3	8	85
	112	250	180	215	5.5	12	28	62	31.3	8	85
	132	300	230	265	5.5	12	38	82	41.3	10	110
	160	350	250	300	7	16	42	112	45.3	12	158

~ Kg	
PAM B5	K 50390
80	59
90	59
100	61
112	61
132	65
160	72

Typ / Type / Tipo Type / Tipo	PAM B14	Øa2	Øb2	Øe2	f2	Øs2	Ød1	l1	t1	u1	o
K 50390	80	120	80	100	3	7	19	42	21.8	6	70
	90	140	95	115	3	9	24	52	27.3	8	70
	100	160	110	130	3.5	9	28	62	31.3	8	85
	112	160	110	130	3.5	9	28	62	31.3	8	85
	132	200	130	165	3.5	11	38	82	41.3	10	110

~ Kg	
PAM B14	K 50390
80	55
90	55
100	57
112	57
132	62