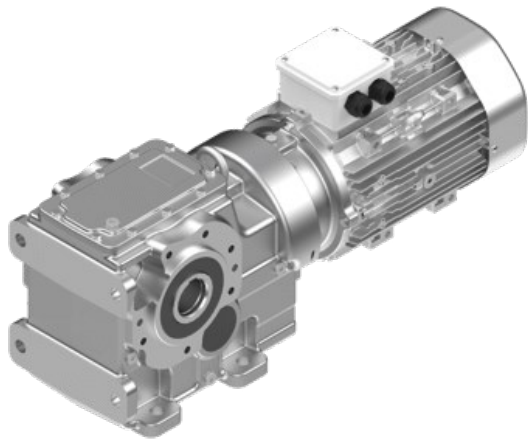


Helical Bevel Gear Units K Series

Technic Selection	
Type	K
Input Option	With Motor
Assembly Shaft Design	DG (HOLLOW SHAFT)
Body Size	35390
Frequency [Hz]	50
fs	4.2
iges	5.74
M2 [Nm]	53
M2max [Nm]	220
Motor Efficiency	IE2
Motor Size	100/2P
n1 [rpm]	2800
n2 [rpm]	487.8
P1 [kW]	3
P1max [kW]	12.53

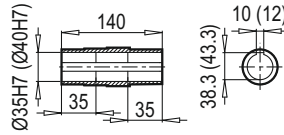
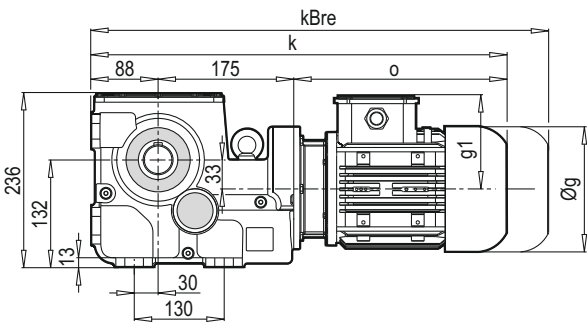


Variation	
Input Connection Type	PAM
Input Backstop Status	Without Backstop
Output Shaft Diameter	ØD=Ø35H7[mm]
Mounting Position	M5
Motor Discription	100L2C
Terminal Box Angle	1
Motor Brand	WAT
Motor Brake Status	Without Brake
Input Connection Size	PAM-100-B5

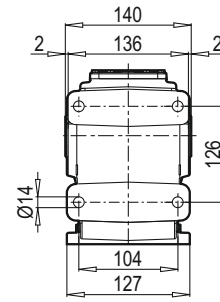
Accessory	
Accessory Type	B5
Accessory Size	FC-Ø200
Accessory Direction	L

Option	
Oil Status	Exist
Oil Type	Mineral ISO VG 220
Vent Plug	Standard
Oil Indicator Plug	None
Product Label	Standard
Color	RAL 7000
Montage Position Status	Standard
Motor Phase	TRIFAZE
Motor Nominal Voltage	230/400 V
Motor Current	AC
Termistor Status	None
Motor Working Class	S1
Motor Insulation Class	F
Motor Accesorry	None
Motor Protection Class	IP55
Cable Outlet Direction	I
Case Material	GGG-40
Reinforced Bearing Status	None
Output Oil Seal Type	NBR
Output Bearing Quality	Standard

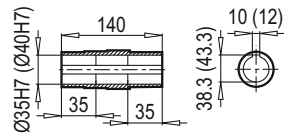
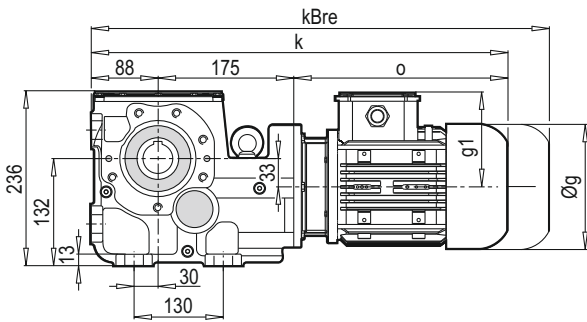
K 35390



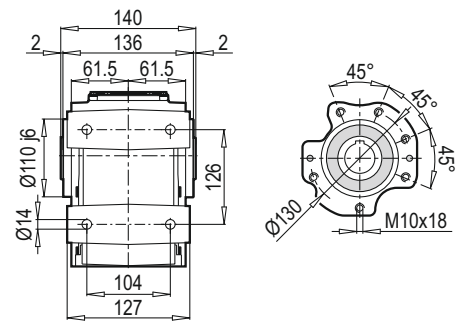
DA



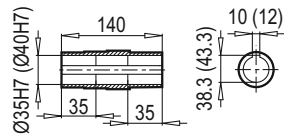
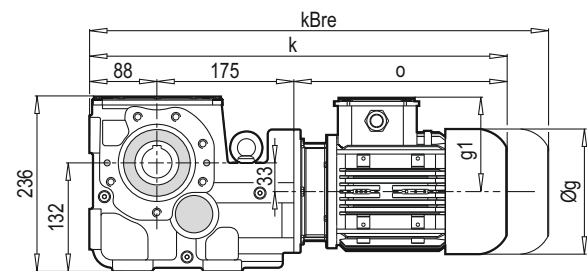
K 35390



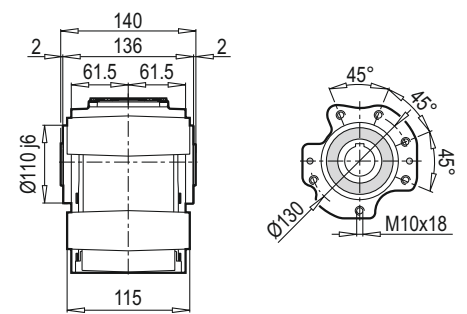
DA / B14



K 35390

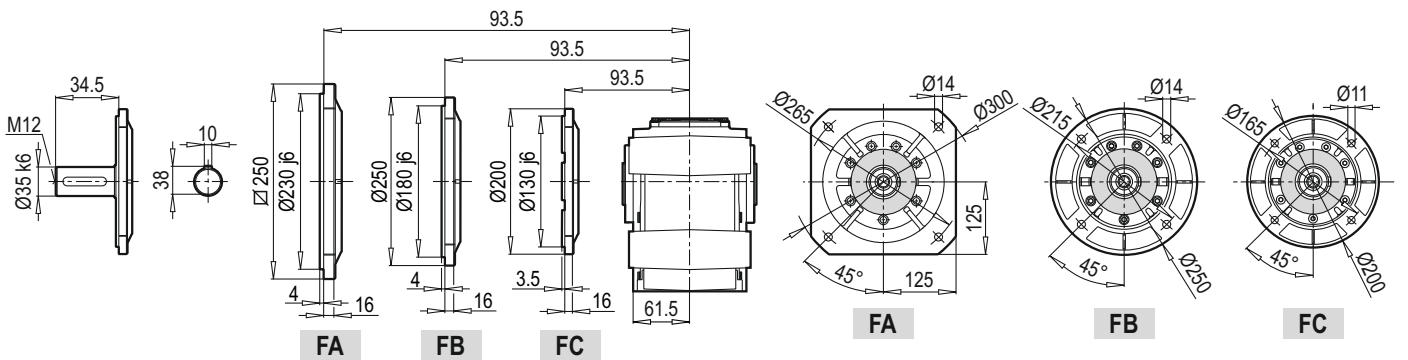


DG / B14



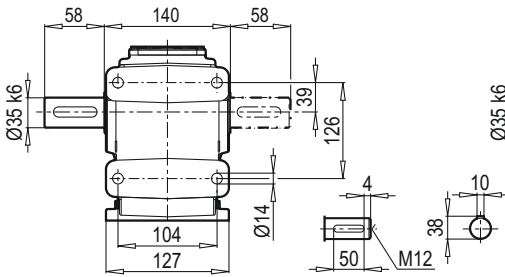
TMG / B5

DG / B5

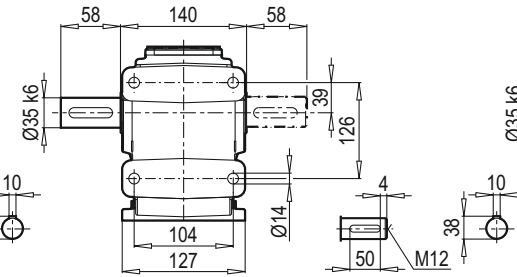


	63M	71M	80M	90S	90L	100L	112M		
g	124	140	159	193	193	217	232		
g1	111	119	127	151	151	160	168		
k	475	504	530	576	596	597	647		
kBre	527	564	592	649	669	678	727		
o	212	241	267	313	333	334	384		

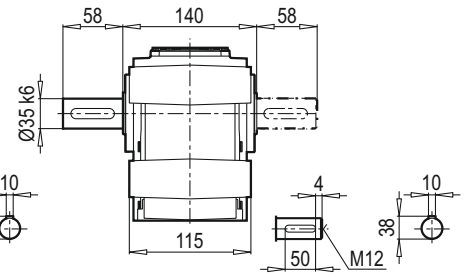
TMA / ÇMA



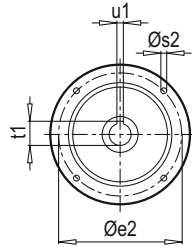
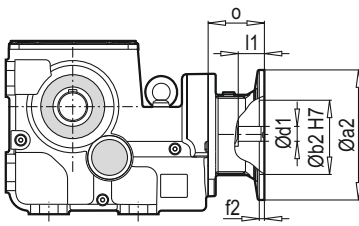
TMA / ÇMA / B14



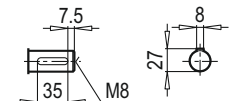
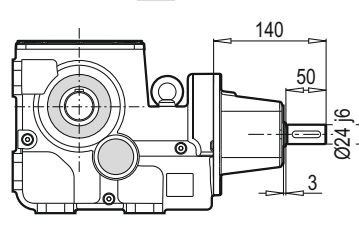
TMG / ÇMG / B14



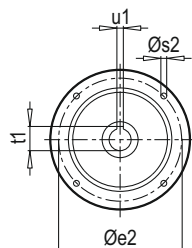
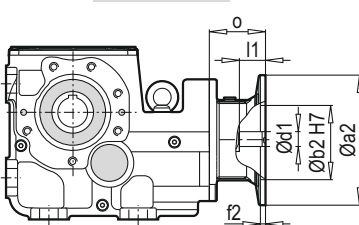
K 35390 PAM B5/B14



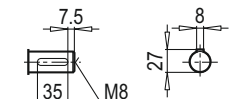
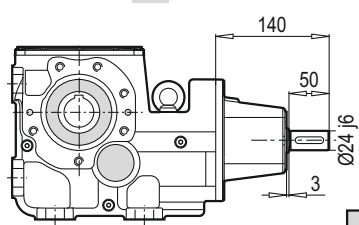
K 35390 W



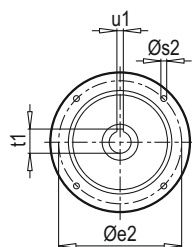
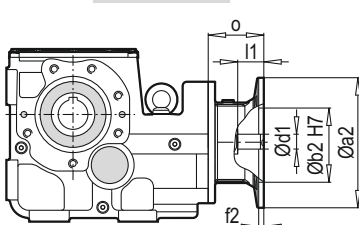
K 35390 PAM B5/B14



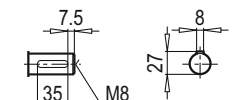
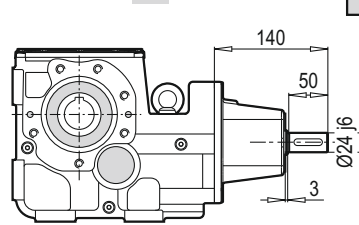
K 35390 W



K 35390 PAM B5/B14



K 35390 W



W ~ Kg	
K 35390	24

Typ / Type / Tipo Type / Tipo	PAM B5	Øa2	Øb2	Øe2	f2	Øs2	Ød1	l1	t1	u1	o
K 35390	63	140	95	115	4.5	8	11	25	12.8	4	57
	71	160	110	130	5	8	14	32	16.3	5	69
	80	200	130	165	5	10	19	42	21.8	6	90
	90	200	130	165	5	10	24	52	27.3	8	90
	100	250	180	215	5.5	12	28	62	31.3	8	105
	112	250	180	215	5.5	12	28	62	31.3	8	105

~ Kg	
PAM B5	K 35390
63	21
71	22
80	23
90	23
100	27
112	27

Typ / Type / Tipo Type / Tipo	PAM B14	Øa2	Øb2	Øe2	f2	Øs2	Ød1	l1	t1	u1	o
K 35390	63	90	60	75	2.5	6	11	25	12.8	4	57
	71	105	70	85	2.5	7	14	32	16.3	5	69
	80	120	80	100	3	7	19	42	21.8	6	90
	90	140	95	115	3	9	24	52	27.3	8	90
	100	160	110	130	3.5	9	28	62	31.3	8	105
	112	160	110	130	3.5	9	28	62	31.3	8	105

~ Kg	
PAM B14	K 35390
63	20
71	21
80	22
90	22
100	24
112	24