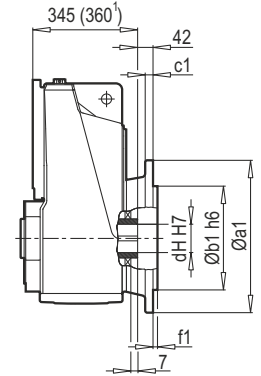
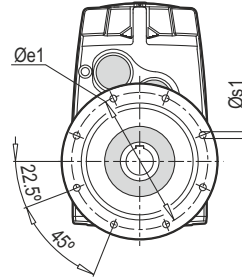
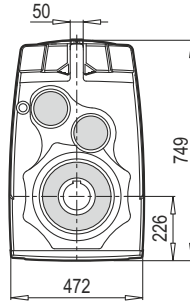
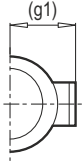
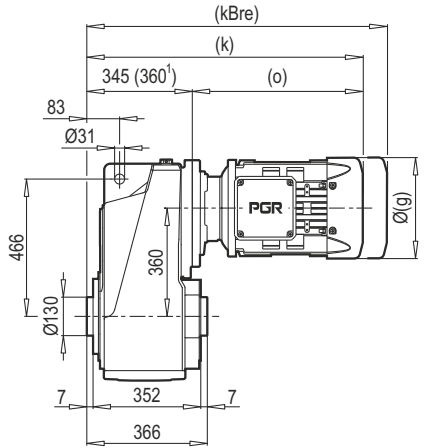
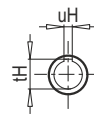
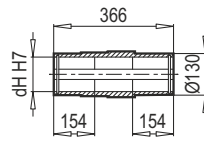


PD 82

PD 82 B5



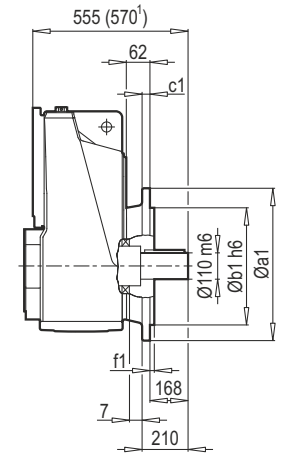
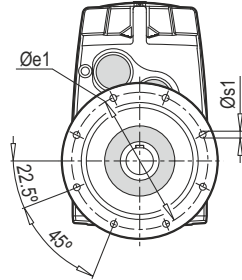
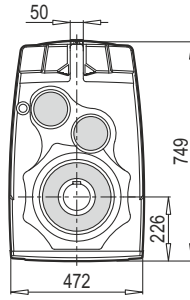
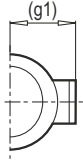
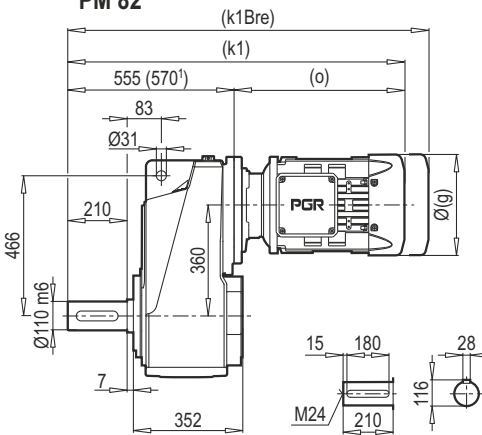
dH	Ø 100	(Ø 95)	(Ø 90)	(Ø 85)	(Ø 80)
uH	28	(25)	(25)	(22)	(22)
tH	106.4	(100.4)	(95.4)	(90.4)	(85.4)



a1	b1	c1	e1	f1	s1
550	450	28	500	5	8x18

PM 82

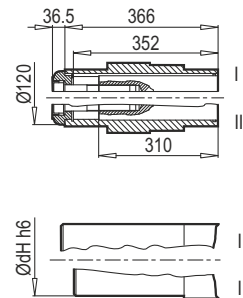
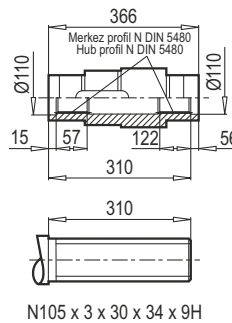
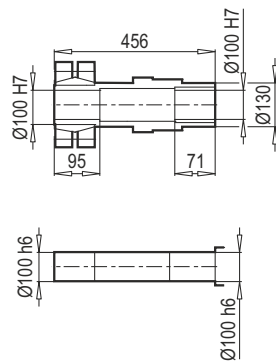
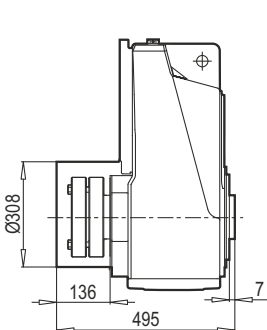
PM 82 B5



PD 82 KS

PD 82 DIN 5480

PD 82 Ç

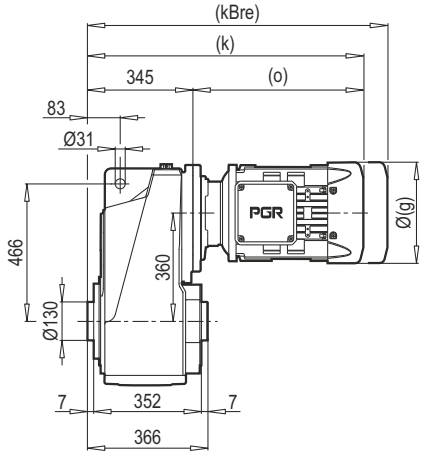


62 - 63

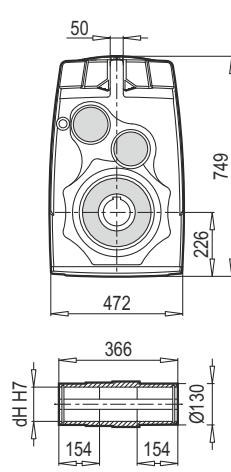
	132 M	160 M/L	180 M/L	200 L	225 S/M	250 M ¹⁾	280 S ¹⁾	
g	279	323	370	415	456	495	527	
g1	182	200	248	260	260	392	367	
k/k1	743/953	809/1019	868/1078	963/1173	1045/1255	1004/1214	1259/1469	
kBre/k1Bre	884/1094	961/1171	1030/1240	1110/1320	1217/1427	1134/1344	-	
o	398	464	523	618	700	644	914	

Not : (...) İşaretli olan ölçüler Motor markasına göre farklılık gösterir / Note : The dimensions which have (...) sign vary depending on the motor brand.

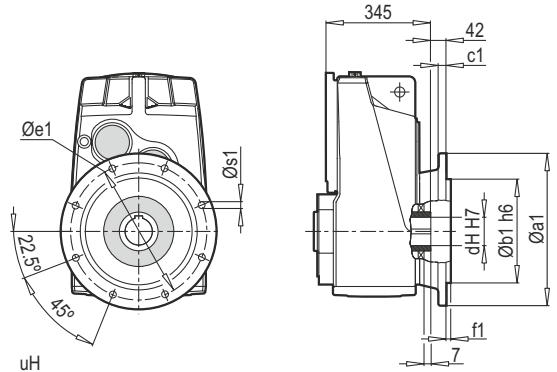
PD 83



dH	Ø 100	(Ø 95)	(Ø 90)	(Ø 85)	(Ø 80)
uH	28	(25)	(25)	(22)	(22)
tH	106.4	(100.4)	(95.4)	(90.4)	(85.4)

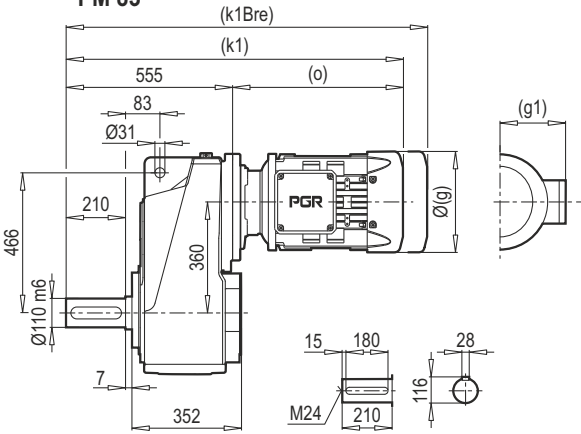


PD 83 B5

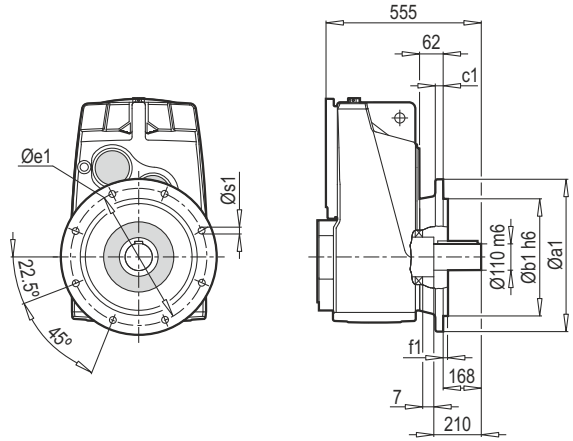


a1	b1	c1	e1	f1	s1
550	450	28	500	5	8x18

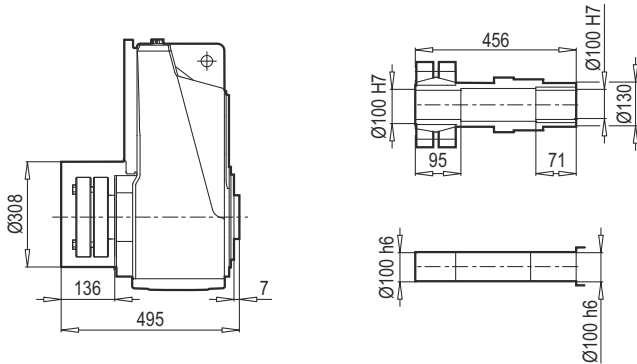
PM 83



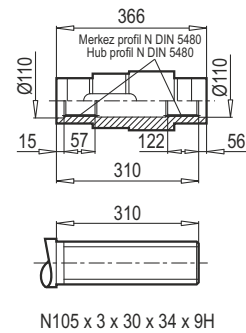
PM 83 B5



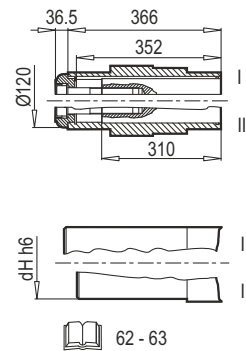
PD 83 KS



PD 83 DIN 5480



PD 83 Ç



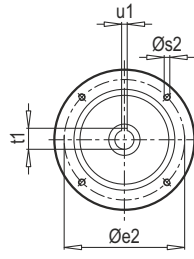
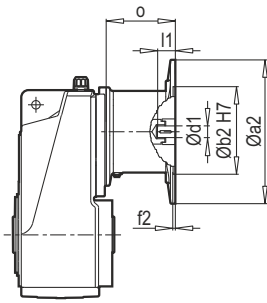
	100 L	112 M	132 S	132 M	160 M/L	180 M/L	200 L	225 S/M
g	217	232	279	279	323	370	415	456
g1	160	168	182	182	200	248	260	260
k/k1	657/867	705/915	708/918	743/953	809/1019	868/1078	963/1173	1045/1255
kBre/k1Bre	738/948	785/995	816/1026	884/1094	961/1171	1030/1240	1110/1320	1217/1427
o	312	360	363	398	464	523	618	700

Not : (...) İşaretli olan ölçüler Motor markasına göre farklılık gösterir / Note : The dimensions which have (...) sign vary depending on the motor brand.

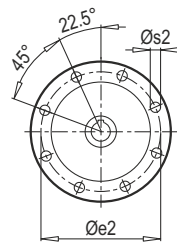
PD 82
PD 83

IEC

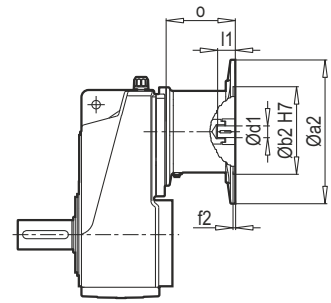
PM 82
PM 83



IEC 100...200



IEC 225...315



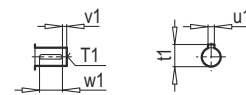
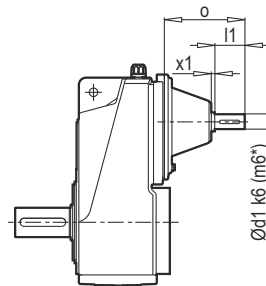
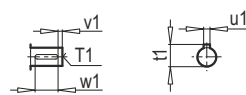
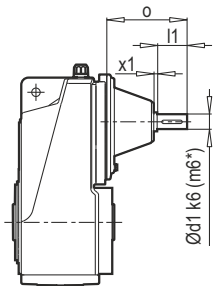
Tip / Type	IEC	Øa2	Øb2	Øe2	f1	Øs2	Ød1	l1	t1	u1	o
PD/PM 83	100	250	180	215	5.0	M12	28	60	31.3	8	127
PD/PM 83	112	250	180	215	5.0	M12	28	60	31.3	8	127
PD/PM 82-83	132	300	230	265	5.0	M12	38	80	41.3	10	177
PD/PM 82-83	160	350	250	300	6.0	M16	42	110	45.3	12	266
PD/PM 82-83	180	350	250	300	6.0	M16	48	110	51.8	14	266
PD/PM 82-83	200	400	300	350	6.0	M16	55	110	59.3	16	229
PD/PM 82-83	225	450	350	400	6.0	M16	60	140	64.4	18	303
PD/PM 82	250	550	450	500	6.0	M16	65	140	69.4	18	304
PD/PM 82	280	550	450	500	6.0	M16	75	140	79.9	20	304

~ Kg		
IEC	PD/PM 82	PD/PM 83
100	-	422
112	-	422
132	431	436
160	458	462
180	458	462
200	473	477
225	489	493
250	547	-
280	547	-

PD 82
PD 83

W

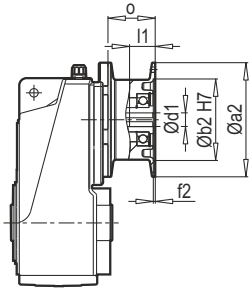
PM 82
PM 83



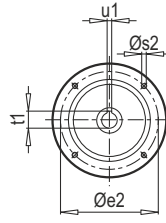
Tip / Type	Ød1	x1	l1	o	T1	t1	u1	v1	w1
PD/PM 82	65*	12	140	397	M20	69	18	15	110
PD/PM 83	42	8	110	288	M16	45	12	10	90

~ Kg	
PD/PM 82	PD/PM 83
510	435

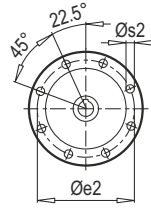
PD 82
PD 83



PAM B5/B14

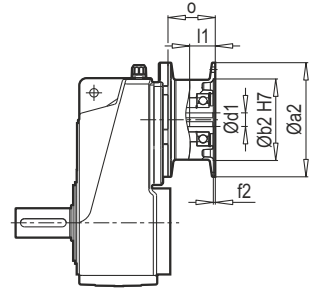


PAM 100...200



PAM 225...315

PM 82
PM 83



Tip / Type	PAM B5	Øa2	Øb2	Øe2	f2	Øs2	Ød1	l1	t1	u1	o
PD/PM 83	100	250	180	215	5.0	M12	28	60	31.3	8	75
PD/PM 83	112	250	180	215	5.0	M12	28	60	31.3	8	75
PD/PM 82-83	132	300	230	265	5.0	M12	38	80	41.3	10	110
PD/PM 82-83	160	350	250	300	6.0	M16	42	110	45.3	12	145
PD/PM 82-83	180	350	250	300	6.0	M16	48	110	51.8	14	145
PD/PM 82-83	200	400	300	350	6.0	M16	55	110	59.3	16	157
PD/PM 82-83	225	450	350	400	6.0	M16	60	140	64.4	18	183
PD/PM 82	250	550	450	500	6.0	M16	65	140	69.4	18	202
PD/PM 82	280	550	450	500	6.0	M16	75	140	79.9	20	202

~ Kg		
PAM B5	PD/PM 82	PD/PM 83
100	-	385
112	-	385
132	392	396
160	409	413
180	409	413
200	416	419
225	426	430
250	486	-
280	486	-

Tip / Type	PAM B14	Øa2	Øb2	Øe2	f2	Øs2	Ød1	l1	t1	u1	o
PD/PM 83	100	160	110	130	5.0	9	28	60	31.3	8	75
PD/PM 83	112	160	110	130	5.0	9	28	60	31.3	8	75
PD/PM 82-83	132	200	130	165	5.0	11	38	80	41.3	10	110

~ Kg		
PAM B14	PD/PM 82	PD/PM 83
100	-	384
112	-	384
132	387	391