

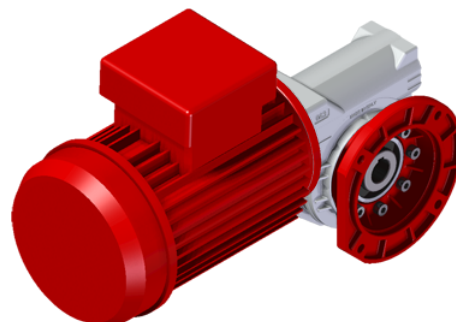
M063F108CS-QB7C

Price

Lead time

Configuration

Type:	M
Size:	063
Input:	71 B14 ø105
Output shaft/bore:	Standard ø25
Mounting:	F1
Mounting position:	B7
Input bore:	-
Coupling:	-
Terminal box position:	B



Technical data

Input rpm (n_1):	1400 min⁻¹
Output rpm (n_2):	31.11 min⁻¹
Ratio (i):	45.00 (08)
Nominal power (P_{1R}):	0.67 kW
Nominal torque (M_{2R}):	135 Nm
Dynamic efficiency (RD):	66%

Selection

Motor power (P_{1M}):	0.37 kW
Output torque (M_{2M}):	75 Nm
Service factor (f.s.):	1.8

Lubrication

Oil quantity:	0.40l
AGIP:	Telium VSF 320
SHELL:	Omala S4 WE 320

On our website

Features	Irreversibility
How to order	Thermal limit
Dimension	Atex certification
Accessories/options	Installation check list
Electric motors	Spare parts list
Selection guide - fs	Complete catalogue
Mounting pos. - lubricant	Selection by power (xls)
Calc. the overhung load	

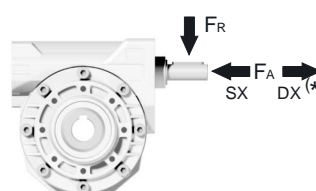
Direction of rotation



Note

Axial and radial loads

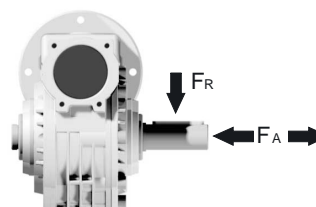
Input shaft



n_2 (min ⁻¹)	FA (N)	FR (N)
1400	90	450

*Strong axial loads in the DX direction are not allowed

Output shaft



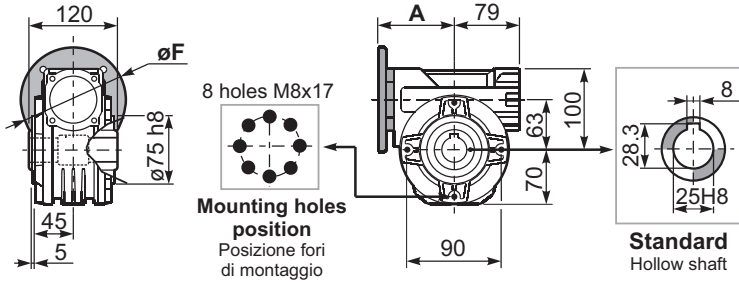
n_2 (min ⁻¹)	FA (N)	FR (N)
200	360	1800
150	400	2000
100	460	2300
75	500	2500
50	600	3000
25	700	3800
15	800	4000

3D dimensions on the Web

Gearbox weight **6.00 kg**
peso riduttore

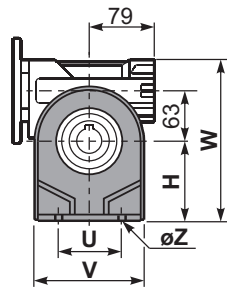
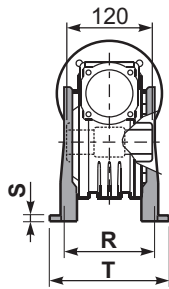
P063**FB**... Basic wormbox
Riduttore base

M. flanges	Kit code	øF	A
63B5	K063.4.041	140	99.5
71B5	K063.4.042	160	97.5
80/90B5	K063.4.043	200	99.5
71B14	K063.4.047	105	97.5
80B14	K063.4.046	120	99.5
90B14	K063.4.041	140	99.5

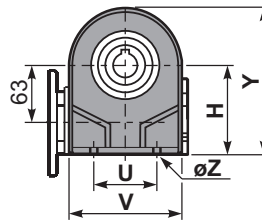


1

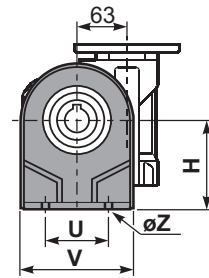
P063**PA**... Feet
Piedini



P063**PB**... Feet
Piedini

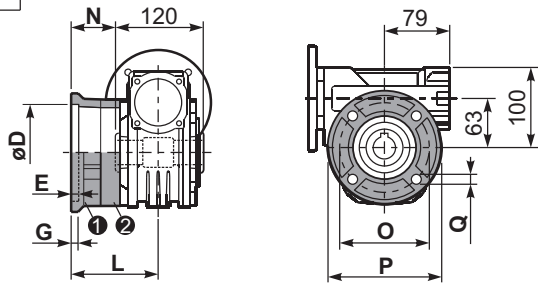


P063**PV**... Feet
Piedini



	H	R	S	T	U	V	Y	W	øZ	kit code
type B	100	111	4	144	95	133	170	200	ø10.5	K063.9.022
type S	-	-	-	-	-	-	-	-	-	-

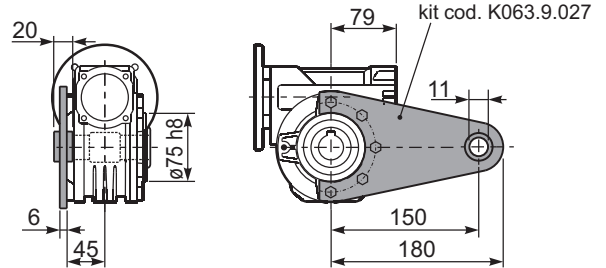
P063**FC**... Output flange
Flangia uscita



type B	øD	E	G	L	N	O	P	Q	kit code
FC	115 ^{+0.20} / _{-0.15}	7	13	86	26	150	175	11	① K063.9.010 ② -
FL	115 ^{+0.20} / _{-0.15}	7	13	116	56	150	175	11	① K063.9.010 ② K063.0.200

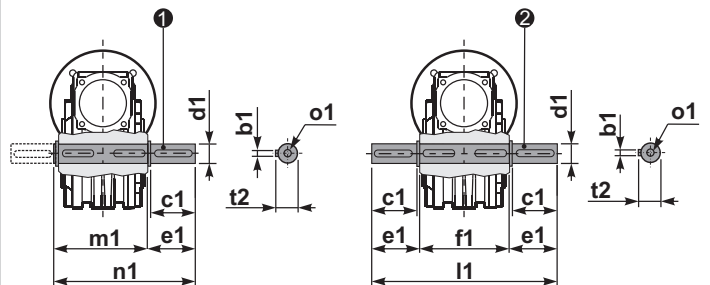
type S	øD	E	G	L	N	O	P	Q	kit code
F1	130 ^{+0.20} / _{-0.15}	7	13	102	42	165	200	13	① KS070.9.013 ② -
F2	115 ^{+0.20} / _{-0.15}	7	13	116	56	150	175	11	① KS063.9.013 ② -
F3	110 ^{+0.035} / ₀	5	11	82	22	130	160	10	① KS063.9.011 ② -

P063**BR**... Reaction arm
Braccio di reazione



P063.....**S**... Single Shaft
Albero lento semplice

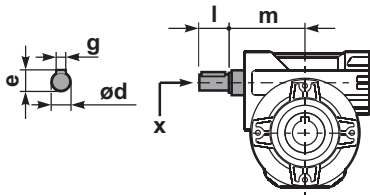
P063.....**D**... Double Shaft
Albero lento bisp.



① kit cod. K063.5.028 type B

② kit cod. K063.5.029 type B

R063**FB**... Input shaft
Albero in entrata



	ød	e	g	l	m	x	kit code
type B	18 h6	20.5	6	45	93	M6x16	① K063.5.006 PAM80 ② K063.5.007 PAM90
type S	19 h6	21.5	6	40	93	M8x20	① KS063.5.008 PAM80 ② KS063.5.009 PAM90

	b1	c1	d1	e1	f1	l1	m1	n1	t2	o1
type B	8	60	25 ^{-0.005} / _{-0.020}	63.2	120	246.4	126.8	190	28	M8x20
type S	-	-	-	-	-	-	-	-	-	-