

# M045FB07CS-PB8B

Price

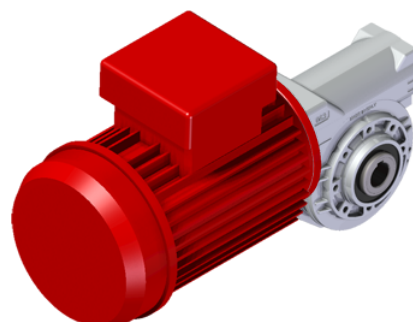
Lead time

## Configuration

Type:	<b>M</b>
Size:	<b>045</b>
Input:	<b>63 B14 ø90</b>
Output shaft/bore:	<b>Standard ø18</b>
Mounting:	<b>FB</b>
Mounting position:	<b>B8</b>
Input bore:	-
Coupling:	-
Terminal box position:	<b>C</b>

## Technical data

Input rpm ( $n_1$ ):	<b>1400 min<sup>-1</sup></b>
Output rpm ( $n_2$ ):	<b>30.43 min<sup>-1</sup></b>
Ratio (i):	<b>46.00 (07)</b>
Nominal power ( $P_{1R}$ ):	<b>0.22 kW</b>
Nominal torque ( $M_{2R}$ ):	<b>41 Nm</b>
Dynamic efficiency (RD):	<b>59%</b>



## Selection

Motor power ( $P_{1M}$ ):	<b>0.18 kW</b>
Output torque ( $M_{2M}$ ):	<b>33 Nm</b>
Service factor (f.s.):	<b>1.2</b>

## Lubrication

Oil quantity:	<b>0.09l</b>
AGIP:	<b>Telium VSF 320</b>
SHELL:	<b>Omala S4 WE 320</b>

## On our website

Features	Irreversibility
How to order	Thermal limit
Dimension	Atex certification
Accessories/options	Installation check list
Electric motors	Spare parts list
Selection guide - fs	Complete catalogue
Mounting pos. - lubricant	Selection by power (xls)
Calc. the overhung load	

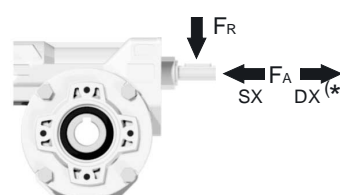
## Note

## Direction of rotation



## Axial and radial loads

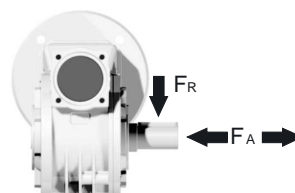
Input shaft



$n_2$ (min <sup>-1</sup> )	FA (N)	FR (N)
<b>1400</b>	42	210

\*Strong axial loads in the DX direction are not allowed

Output shaft



$n_2$ (min <sup>-1</sup> )	FA (N)	FR (N)
<b>200</b>	180	900
<b>150</b>	200	1000
<b>100</b>	220	1100
<b>75</b>	240	1200
<b>50</b>	260	1400
<b>25</b>	300	1800
<b>15</b>	400	2000

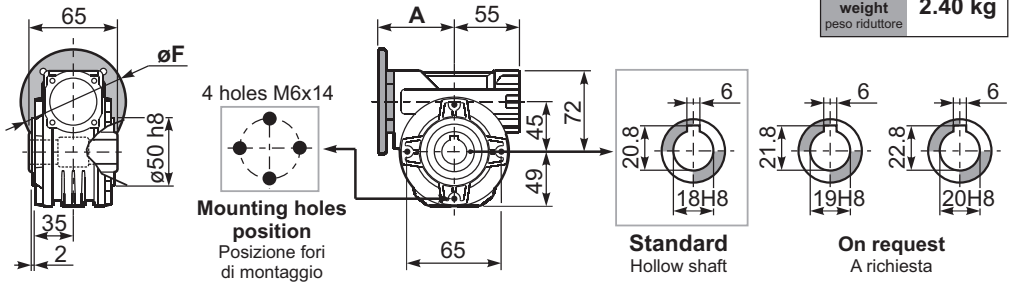
## Rightangle - Gear 41Nm **045**

3D dimensions on the Web

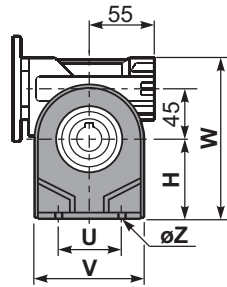
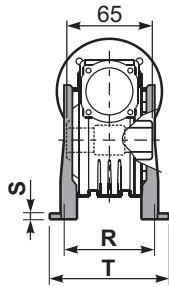
Gearbox weight  
peso riduttore **2.40 kg**

P045**FB**... Basic wormbox  
Riduttore base

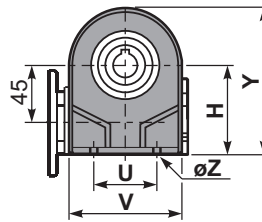
M. flanges	Kit code	øF	A
63B5	K050.4.041	138	74
71B5	K050.4.042	160	71.5
56B14	KC40.4.049	80	71.5
63B14	K050.4.047	90	74
71B14	K050.4.045	105	71.5



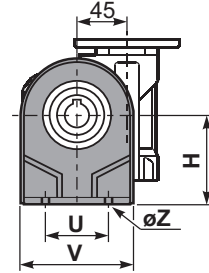
P045**PA**... Feet  
Piedini



P045**PB**... Feet  
Piedini

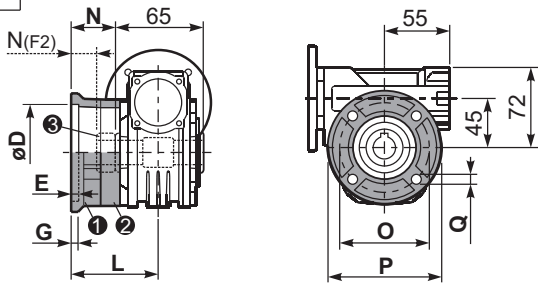


P045**PV**... Feet  
Piedini



	H	R	S	T	U	V	Y	W	øZ	kit code
type B	72	81	3	100	52	98	121	144	ø10.5	K045.9.022
type S	71	84	8	100	70	90	120	143	ø8	KS045.9.023

P045**FC**... Output flange  
Flangia uscita

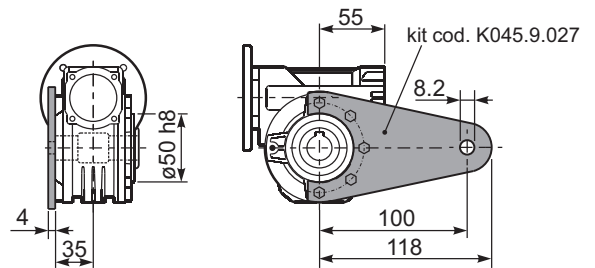


type B	øD	E	G	L	N	O	P	Q	kit code
FC	60 <sup>+0.15</sup> / <sub>+0.05</sub>	9	9	60.5	28	87	110	8.5	① K045.9.010 ② -
FL	60 <sup>+0.15</sup> / <sub>+0.05</sub>	9	9	90.5	58	87	110	8.5	① K045.9.010 ② K045.0.200

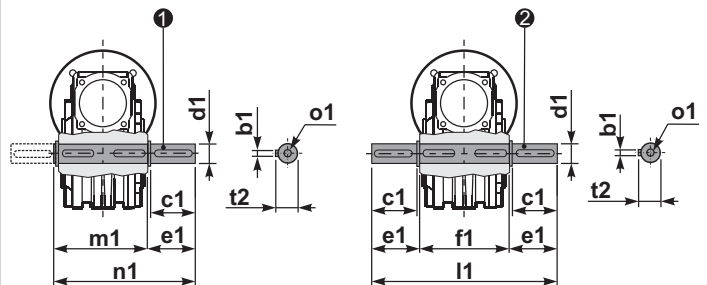
type S	øD	E	G	L	N	O	P	Q	kit code
F1	95 <sup>+0.20</sup> / <sub>+0.15</sub>	4	11	73.5	41	115	140	9	① KS045.9.013 ② -
F2	60 <sup>+0.15</sup> / <sub>+0.05</sub>	9	9	60.5	19	87	110	8.5	① KS045.9.010 ② S045.0.204
F3	80 <sup>+0.15</sup> / <sub>+0.10</sub>	3	8	51.5	19	100	120	9	① KS045.9.014 ② -

P045**BR**... Reaction arm  
Braccio di reazione



P045.....**S**... Single Shaft  
Albero lento semplice

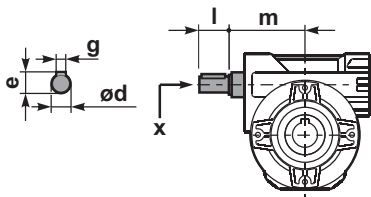
P045.....**D**... Double Shaft  
Albero lento bisp.



① kit cod. K045.5.028 type B  
kit cod. KS045.5.030 type S

② kit cod. K045.5.029 type B  
kit cod. KS045.5.031 type S

R045**FB**... Input shaft  
Albero in entrata



	ød	e	g	l	m	x	kit code
type B	11 h6	12.5	4	30	68	-	① K045.5.006 PAM71 ② -
type S	-	-	-	-	-	-	① - ② -

	b1	c1	d1	e1	f1	l1	m1	n1	t2	o1
type B	6	32	18 <sup>-0.005</sup> / <sub>-0.020</sub>	43	65	151	70	113	20.5	M6x18
type S	6	40	19 <sup>-0.005</sup> / <sub>-0.020</sub>	58.8	65	182	70	128.5	21.5	M8x20