

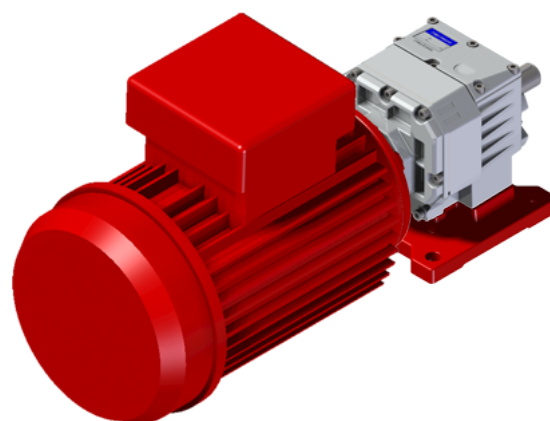
M302AS102DN-QB3-

Price

Lead time

Configuration

Type:	M
Size:	302A
Input:	71 B14 ø105
Output shaft/bore:	ø20
Mounting:	S1
Mounting position:	B3
Input bore:	-
Coupling:	-
Terminal box position:	B



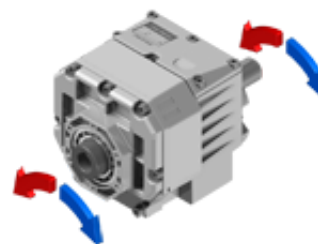
Technical data

Input rpm (n_1):	1400 min⁻¹
Output rpm (n_2):	327.27 min⁻¹
Ratio (i):	4.28 (02)
Nominal power (P_{1R}):	1.43 kW
Nominal torque (M_{2R}):	40 Nm
Dynamic efficiency (RD):	96%

Selection

Motor power (P_{1M}):	0.37 kW
Output torque (M_{2M}):	10 Nm
Service factor (f.s.):	3.9

Direction of rotation



Lubrication

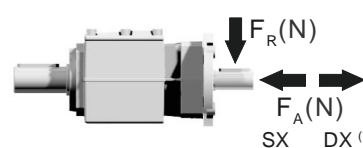
Oil quantity:	0.15l
AGIP:	Telium VSF 320
SHELL:	Omala S4 WE 320

On our website

Features	Atex certification
How to order	Installation check list
Dimension	Spare parts list
Accessories/options	Complete catalogue
Electric motors	Selection by power (xls)
Selection guide - fs	
Mounting pos. - lubricant	
Calc. the overhung load	

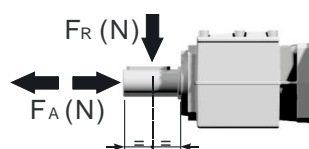
Axial and radial loads

Input shaft



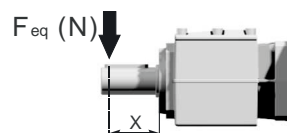
n_2 (min ⁻¹)	FA (N)	FR (N)
1400	226	1130
900	264	1320
500	322	1610

Output shaft



n_2 (min ⁻¹)	FA (N)	FR (N)
300	140	700
250	151	756
200	185	924
140	246	1320
120	270	1350
85	300	1500
70	340	1700
40	380	1900

$$F_{eq} = F_R \frac{35.7}{X+20.7}$$



Note

