

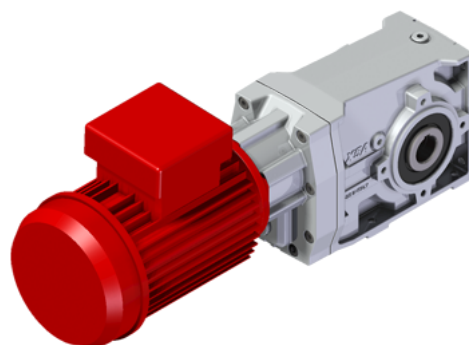
# MX32SC16-BBRN-BV6-

Price

Lead time

## Configuration

Type:	<b>M</b>
Size:	<b>X32S</b>
Input:	<b>63 B5 ø140</b>
Output shaft/bore:	<b>ø20</b>
Mounting:	<b>BR</b>
Mounting position:	<b>V6</b>
Input bore:	-
Coupling:	-
Terminal box position:	<b>B</b>



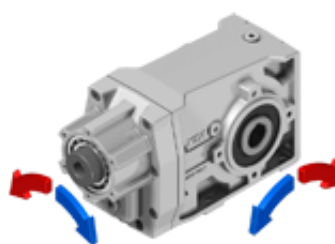
## Technical data

Input rpm ( $n_1$ ):	<b>1400 min<sup>-1</sup></b>
Output rpm ( $n_2$ ):	<b>18.05 min<sup>-1</sup></b>
Ratio (i):	<b>77.55 (16)</b>
Nominal power ( $P_{1R}$ ):	<b>0.18 kW</b>
Nominal torque ( $M_{2R}$ ):	<b>90 Nm</b>
Dynamic efficiency (RD):	<b>96%</b>

## Selection

Motor power ( $P_{1M}$ ):	<b>0.18 kW</b>
Output torque ( $M_{2M}$ ):	<b>97 Nm</b>
Service factor (f.s.):	<b>0.9</b>

## Direction of rotation



## Lubrication

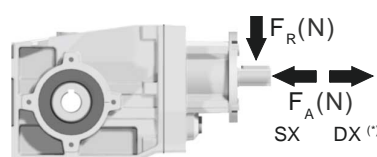
Oil quantity:	<b>0.60l</b>
AGIP:	<b>Telium VSF 320</b>
SHELL:	<b>Omala S4 WE 320</b>

## On our website

Features	Atex certification
How to order	Installation check list
Dimension	Spare parts list
Accessories/options	Complete catalogue
Electric motors	Selection by power (xls)
Selection guide - fs	
Mounting pos. - lubricant	
Calc. the overhung load	

## Axial and radial loads

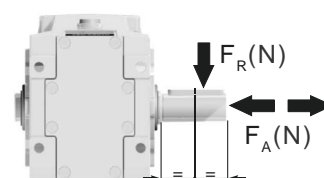
Input shaft



$n_2$ (min <sup>-1</sup> )	FA (N)	FR (N)
<b>1400</b>	240	1200
<b>900</b>	280	1400
<b>500</b>	340	1700

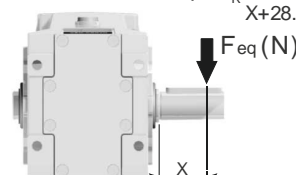
\*Strong axial loads in the DX direction are not allowed

Output shaft



$n_2$ (min <sup>-1</sup> )	FA (N)	FR (N)
<b>250</b>	400	2000
<b>150</b>	450	2250
<b>100</b>	500	2500
<b>75</b>	560	2800
<b>50</b>	560	2800
<b>25</b>	560	2800
<b>15</b>	560	2800

$$F_{eq} = F_R \frac{47.5}{X+28.5}$$



\*On request taper roller bearings to increase loads

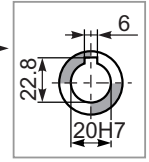
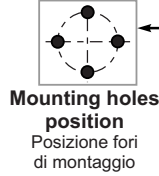
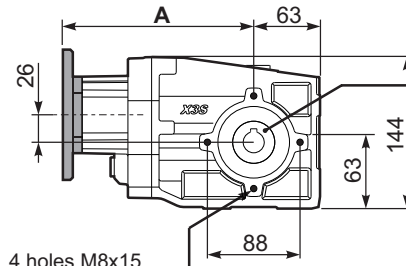
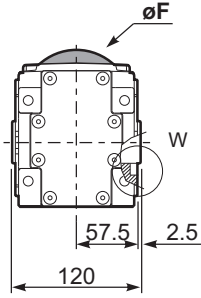
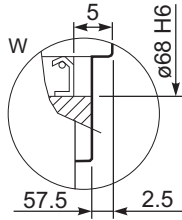
## Note

3D dimensions on the Web

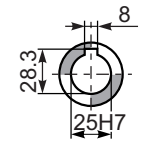
**PX32SC...** Basic Gearbox  
Riduttore base

Gearbox weight  
peso riduttore **6.30 kg**

M. flanges	Kit code	øF	A
<b>63B5</b>	K063.4.041	140	184
<b>71B5</b>	K063.4.042	160	182
<b>80/90B5</b>	K063.4.043	200	184
<b>71B14</b>	K063.4.047	105	182
<b>80B14</b>	K063.4.046	120	184
<b>90B14</b>	K063.4.041	140	184

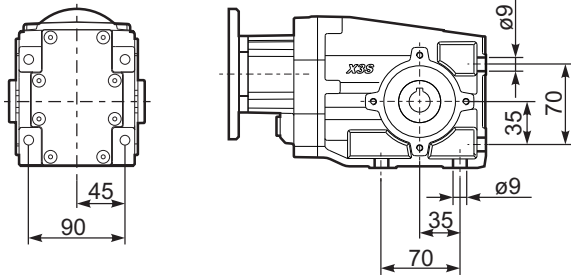


**Standard**  
Hollow shaft

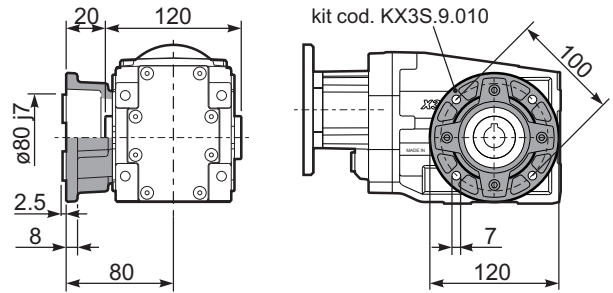


**On request**  
A richiesta

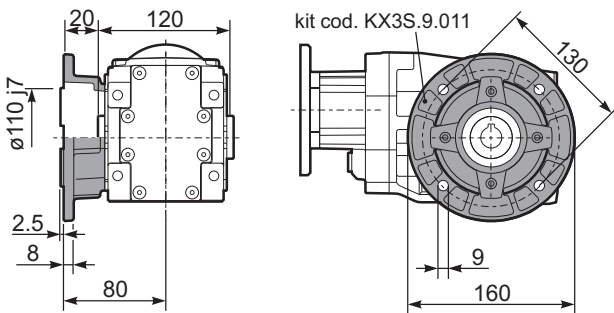
**PX32S...FB..** Feet  
Piedini



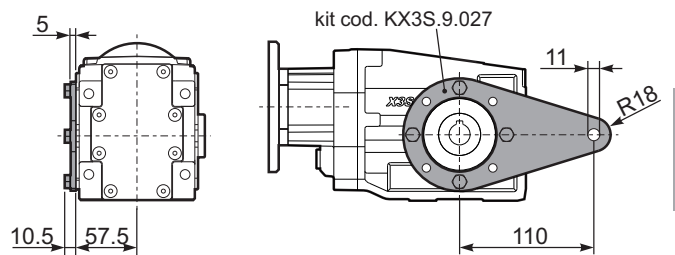
**PX32S...-F1..** Output flange  
Flangia uscita



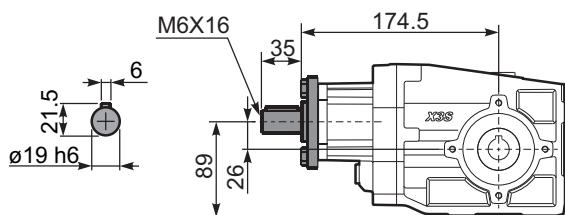
**PX32S...-F2..** Output flange  
Flangia uscita



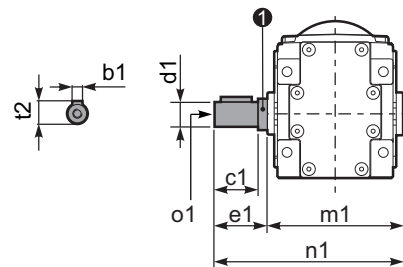
**PX32S...BR..** Reaction Arm  
Braccio di reazione



**RX32S...** Input shaft  
Albero in entrata



**PX32SA..** Single output shaft  
Albero semplice in uscita



d1	b1	c1	e1	m1	n1	t2	o1	① kit code
ø20 k6	6	37.5	40	120	160	22.5	M8x20	KX2S.5.028
ø25 <sup>-0.005</sup> <sub>-0.020</sub>	8	60	63.2	126.8	190	28	M8x20	K063.5.028