

# M512AB303HN-VB3-

Price

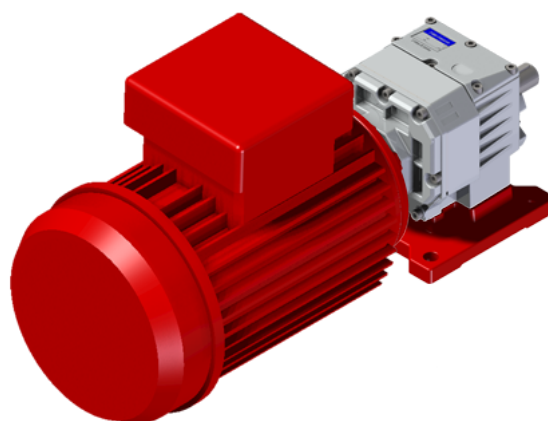
Lead time

## Configuration

Type:	<b>M</b>
Size:	<b>512A</b>
Input:	<b>132 B14 ø200</b>
Output shaft/bore:	<b>ø30</b>
Mounting:	<b>B3</b>
Mounting position:	<b>B3</b>
Input bore:	-
Coupling:	-
Terminal box position:	<b>A</b>

## Technical data

Input rpm ( $n_1$ ):	<b>1400 min<sup>-1</sup></b>
Output rpm ( $n_2$ ):	<b>279.20 min<sup>-1</sup></b>
Ratio (i):	<b>5.01 (03)</b>
Nominal power ( $P_{1R}$ ):	<b>6.40 kW</b>
Nominal torque ( $M_{2R}$ ):	<b>210 Nm</b>
Dynamic efficiency (RD):	<b>96%</b>



## Selection

Motor power ( $P_{1M}$ ):	<b>5.50 kW</b>
Output torque ( $M_{2M}$ ):	<b>176 Nm</b>
Service factor (f.s.):	<b>1.2</b>

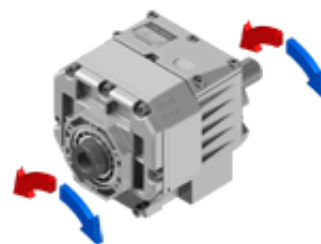
## Lubrication

Oil quantity:	<b>0.70l</b>
AGIP:	<b>Telium VSF 320</b>
SHELL:	<b>Omala S4 WE 320</b>

## On our website

Features	Atex certification
How to order	Installation check list
Dimension	Spare parts list
Accessories/options	Complete catalogue
Electric motors	Selection by power (xls)
Selection guide - fs	
Mounting pos. - lubricant	
Calc. the overhung load	

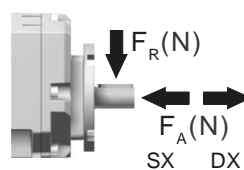
## Direction of rotation



## Note

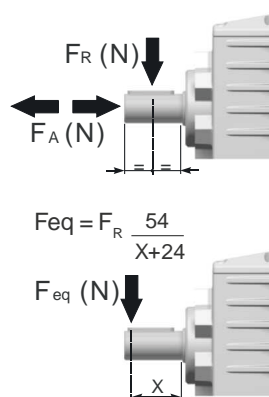
## Axial and radial loads

Input shaft



$n_2$ (min <sup>-1</sup> )	FA (N)	FR (N)
<b>1400</b>	400	2000
<b>900</b>	440	2200
<b>500</b>	440	2200

Output shaft



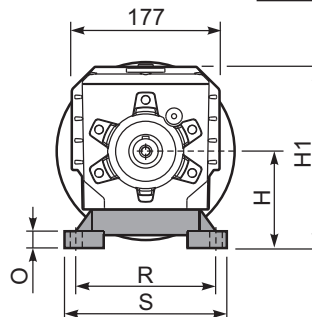
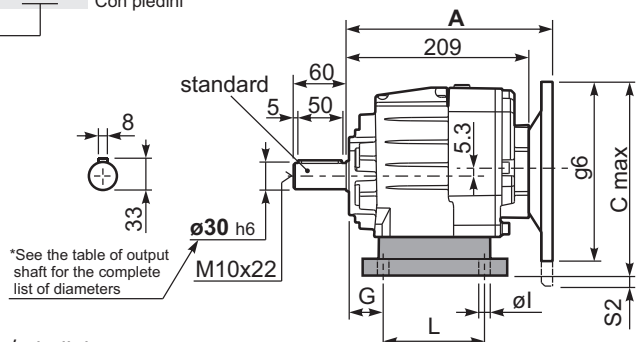
$n_2$ (min <sup>-1</sup> )	FA (N)	FR (N)
<b>300</b>	460	2300
<b>250</b>	480	2400
<b>200</b>	520	2600
<b>140</b>	600	3000
<b>120</b>	620	3100
<b>85</b>	700	3500
<b>70</b>	780	3900
<b>40</b>	900	4500
<b>15</b>	1000	5000

## Coaxial - Gear **512A** 360Nm

3D dimensions on the Web

P512A**B1**... With feet  
Con piedini

Gearbox weight / peso riduttore: With flange **11.7 kg**  
With feet **11.9 Kg**



\*See the table of output shaft for the complete list of diameters

Feet / piedini

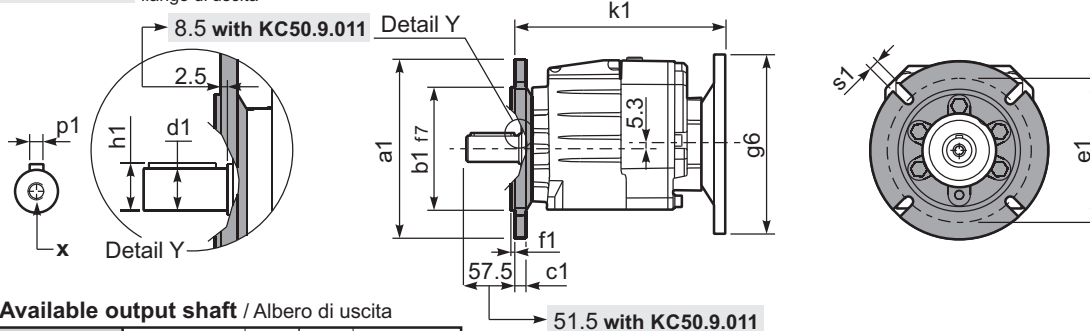
Feet Code	Market reference	G	H	R	L	S	H1	O	øl	S2 only with motor flange	B5 max. Flange	kit code
B3	312/3	18	110	160	130	190	211	20	11	10 100/112B5 35 132B5	-	KC50.9.024
B4	30/35	20	130	180	149.5	216	231	18	14	15 132B5	-	KC60.9.024
S4	47-57	30	115	135	165	170	216	25	14	5 100/112B5 30 132B5	-	KC50.9.022
H3	023-233	30	130	135	135	185	231	25	14	15 132B5	-	KC50.9.025
M2	52/3	30	110	135+150	100	190	211	18	11	10 100/112B5 35 132B5	-	KC50.9.023

Other feet are available, see our web site  
Sono disponibili altri piedini, consulta il nostro sito web

A see on page bottom

Most popular types  
Tipi più diffusi

P512A-**F**... Output flanges  
flange di uscita



\*Available output shaft / Albero di uscita

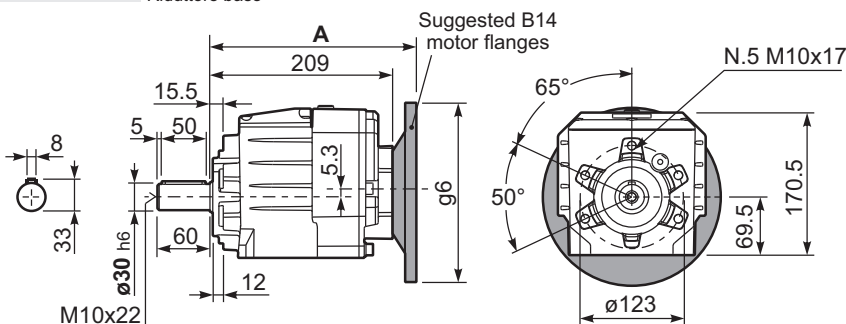
	Shaft - d1	p1	h1	x
Standard	ø 30x60	8	33	M10x22
On request A richiesta	ø 24x50	8	27	M8x19
	ø 25x50	8	28	M8x19
	ø 28x60	8	31	M8x19
	ø 35x60	10	38	M10x22

Available output flanges / flange di uscita

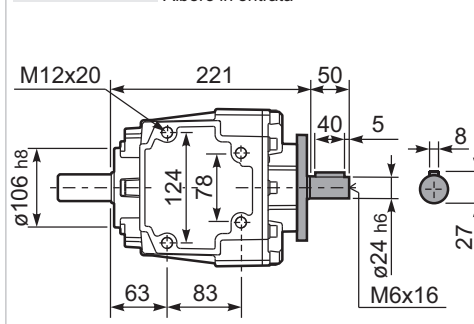
a1 ø	b1	c1	e1	f1	s1	kit code
160	110	14	130	3.5	11	KC50.9.011
200	130	13	165	3.5	11	KC50.9.012
250	180	15.5	215	4	14	KC50.9.013

With flange and feet only on request. Ask for compatibility

P512A-**N**... Basic gearbox  
Riduttore base



R512A-**N**... Input Shaft  
Albero in entrata



B5 Motor Flanges	A	C <sub>max</sub>	g6	k1	kit code	k1 with KC50.9.011	B14 Motor Flanges	A	C <sub>max</sub>	g6	k1	kit code	k1 with KC50.9.011
71 B5	227.5	215.3	160	230	K023.4.041	236	80 B14	229.5	195.3	120	232	K085.4.046	238
80/90 B5	229.5	235.3	200	232	K023.4.042	238	90 B14	229.5	205.3	140	232	K085.4.045	238
100/112 B5	238.5	260.3	250	241	K023.4.043	247	100/112 B14	238.5	215.3	160	241	K085.4.047	247
132 B5	259.5	285.3	300	259	KC51.4.043	265	132 B14	259.5	235.3	200	259	KC51.4.041	265