

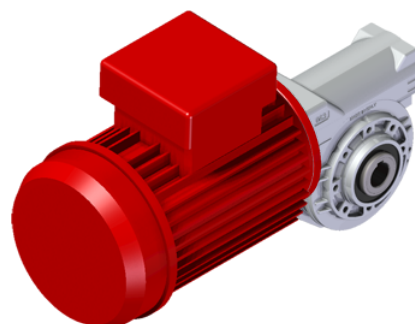
M045FB04C0-QB3C

Price

Lead time

Configuration

| | |
|------------------------|---------------------|
| Type: | M |
| Size: | 045 |
| Input: | 71 B14 ø105 |
| Output shaft/bore: | Standard ø18 |
| Mounting: | FB |
| Mounting position: | B3 |
| Input bore: | - |
| Coupling: | - |
| Terminal box position: | B |



Technical data

| | |
|------------------------------|-------------------------------|
| Input rpm (n_1): | 1400 min⁻¹ |
| Output rpm (n_2): | 66.67 min⁻¹ |
| Ratio (i): | 21.00 (04) |
| Nominal power (P_{1R}): | 0.43 kW |
| Nominal torque (M_{2R}): | 41 Nm |
| Dynamic efficiency (RD): | 67% |

Selection

| | |
|-----------------------------|----------------|
| Motor power (P_{1M}): | 0.37 kW |
| Output torque (M_{2M}): | 36 Nm |
| Service factor (f.s.): | 1.2 |

Lubrication

| | |
|---------------|------------------------|
| Oil quantity: | 0.09l |
| AGIP: | Telium VSF 320 |
| SHELL: | Omala S4 WE 320 |

On our website

| | |
|---------------------------|--------------------------|
| Features | Irreversibility |
| How to order | Thermal limit |
| Dimension | Atex certification |
| Accessories/options | Installation check list |
| Electric motors | Spare parts list |
| Selection guide - fs | Complete catalogue |
| Mounting pos. - lubricant | Selection by power (xls) |
| Calc. the overhung load | |

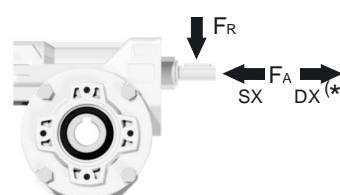
Note

Direction of rotation



Axial and radial loads

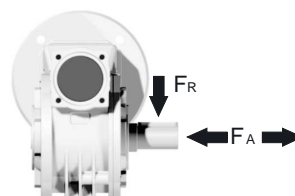
Input shaft



| n_2 (min ⁻¹) | FA (N) | FR (N) |
|-------------------------------|-----------|-----------|
| 1400 | 42 | 210 |

*Strong axial loads in the DX direction are not allowed

Output shaft



| n_2 (min ⁻¹) | FA (N) | FR (N) |
|-------------------------------|-----------|-----------|
| 200 | 180 | 900 |
| 150 | 200 | 1000 |
| 100 | 220 | 1100 |
| 75 | 240 | 1200 |
| 50 | 260 | 1400 |
| 25 | 300 | 1800 |
| 15 | 400 | 2000 |

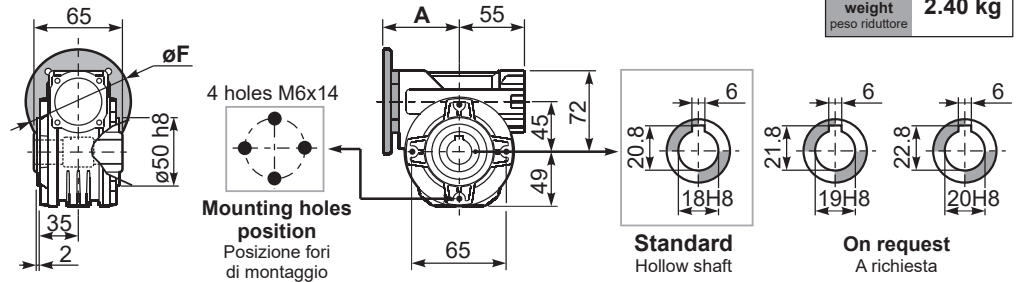
Rightangle - Gear 41Nm **045**

3D dimensions on the Web

P045**FB**... Basic wormbox
Riduttore base

Gearbox weight
peso riduttore **2.40 kg**

| M. flanges | Kit code | øF | A |
|--------------|------------|-----|------|
| 63B5 | K050.4.041 | 138 | 74 |
| 71B5 | K050.4.042 | 160 | 71.5 |
| 56B14 | KC40.4.049 | 80 | 71.5 |
| 63B14 | K050.4.047 | 90 | 74 |
| 71B14 | K050.4.045 | 105 | 71.5 |

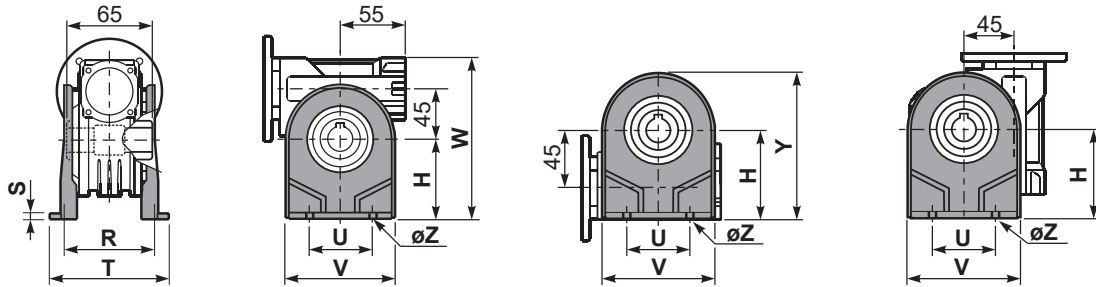


1

P045**PA**... Feet
Piedini

P045**PB**... Feet
Piedini

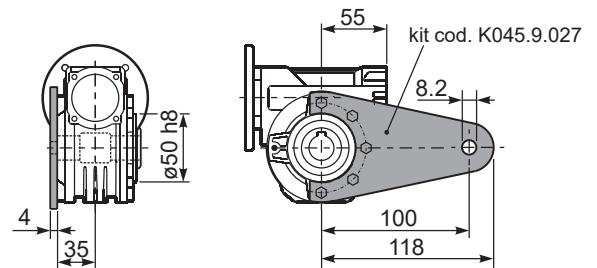
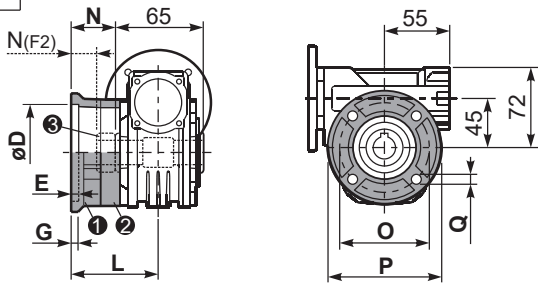
P045**PV**... Feet
Piedini



| | H | R | S | T | U | V | Y | W | øZ | kit code |
|--------|----|----|---|-----|----|----|-----|-----|-------|-------------|
| type B | 72 | 81 | 3 | 100 | 52 | 98 | 121 | 144 | ø10.5 | K045.9.022 |
| type S | 71 | 84 | 8 | 100 | 70 | 90 | 120 | 143 | ø8 | KS045.9.023 |

P045**FC**... Output flange
Flangia uscita

P045**BR**... Reaction arm
Braccio di reazione

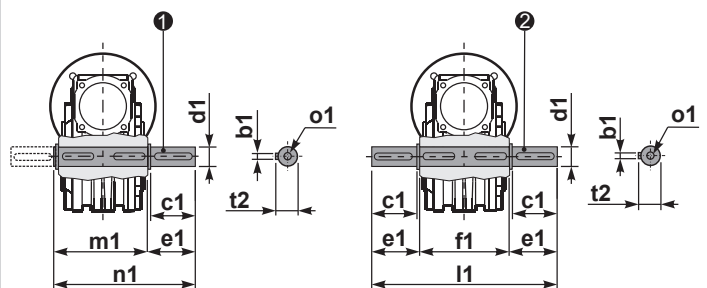


| type B | øD | E | G | L | N | O | P | Q | kit code |
|-----------|--|---|---|------|----|----|-----|-----|------------------------------|
| FC | 60 ^{+0.15} / _{+0.05} | 9 | 9 | 60.5 | 28 | 87 | 110 | 8.5 | ① K045.9.010 ② - |
| FL | 60 ^{+0.15} / _{+0.05} | 9 | 9 | 90.5 | 58 | 87 | 110 | 8.5 | ① K045.9.010 ② K045.0.200 |

| type S | øD | E | G | L | N | O | P | Q | kit code |
|-----------|--|---|----|------|----|-----|-----|-----|-------------------------------|
| F1 | 95 ^{+0.20} / _{+0.15} | 4 | 11 | 73.5 | 41 | 115 | 140 | 9 | ① KS045.9.013 ② - |
| F2 | 60 ^{+0.15} / _{+0.05} | 9 | 9 | 60.5 | 19 | 87 | 110 | 8.5 | ① KS045.9.010 ② S045.0.204 |
| F3 | 80 ^{+0.15} / _{+0.10} | 3 | 8 | 51.5 | 19 | 100 | 120 | 9 | ① KS045.9.014 ② - |

P045.....**S**... Single Shaft
Albero lento semplice

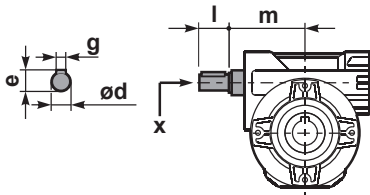
P045.....**D**... Double Shaft
Albero lento bisp.



① kit cod. K045.5.028 type B
kit cod. KS045.5.030 type S

② kit cod. K045.5.029 type B

R045FB... Input shaft
Albero in entrata



| | ød | e | g | l | m | x | kit code |
|--------|-------|------|---|----|----|---|---------------------------|
| type B | 11 h6 | 12.5 | 4 | 30 | 68 | - | ① K045.5.006 PAM71 ② - |
| type S | - | - | - | - | - | - | ① - ② - |

| | b1 | c1 | d1 | e1 | f1 | l1 | m1 | n1 | t2 | o1 |
|--------|----|----|--|------|----|-----|----|-------|------|-------|
| type B | 6 | 32 | 18 ^{-0.005} / _{-0.020} | 43 | 65 | 151 | 70 | 113 | 20.5 | M6x18 |
| type S | 6 | 40 | 19 ^{-0.005} / _{-0.020} | 58.8 | - | - | 70 | 128.5 | 21.5 | M8x20 |